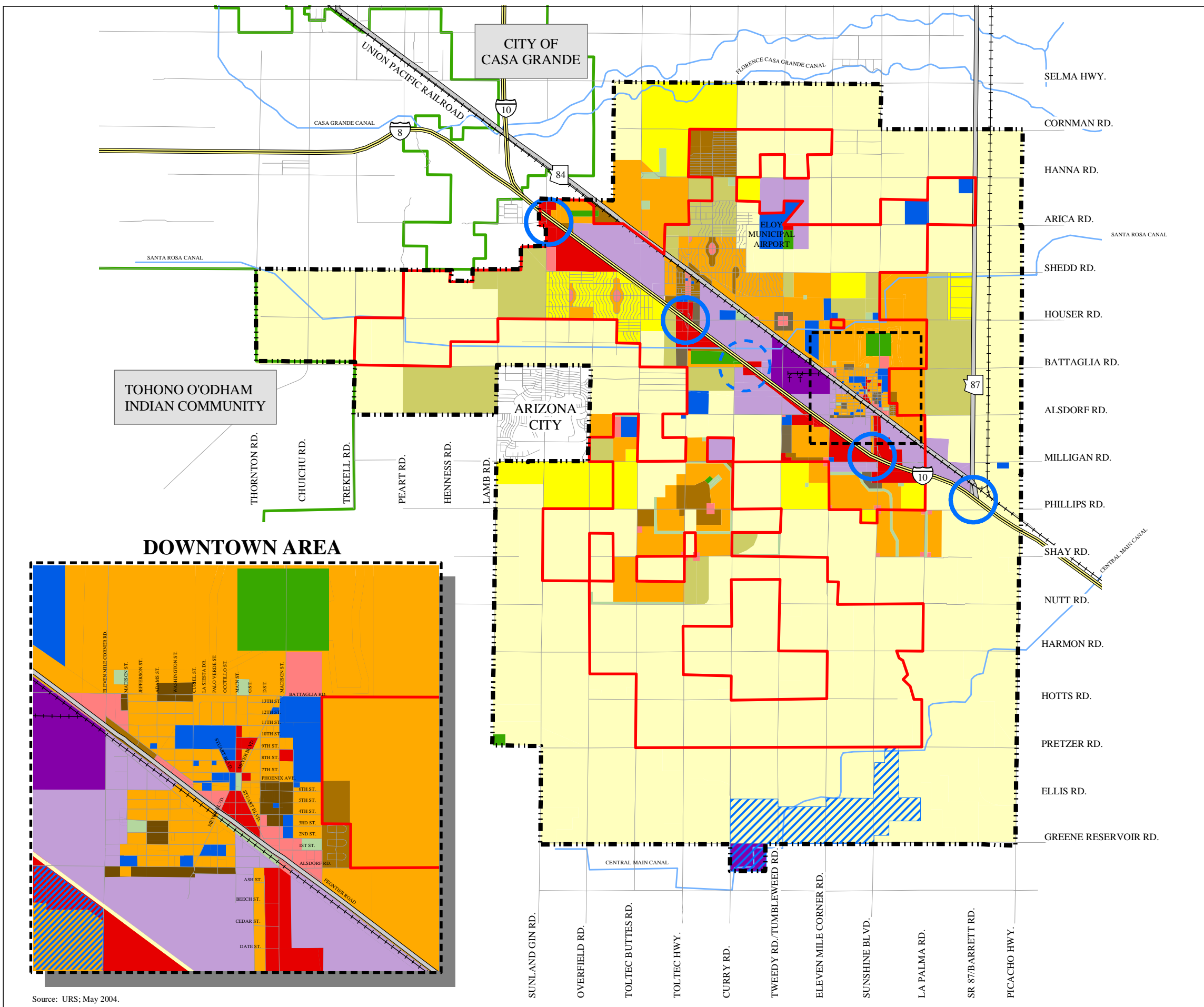
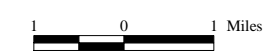
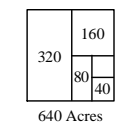




City of Eloy General Plan

LAND USE PLAN

- Rural Residential (.05 to .20 du/ac)
- Estate Density Residential (.20 to 1.0 du/ac)
- Low Density Residential (1.0 to 4.0 du/ac)
- Medium Density Residential (4.0 to 6.5 du/ac)
- Medium-High Density Residential (6.5 to 10.0 du/ac)
- High Density Residential (10.0 to 24.0 du/ac)
- Neighborhood Commercial
- Community Commercial
- Commercial Recreation
- Light Industrial
- Manufacturing/Industrial
- Parks/Open Space
- Public/Institutional
- Specific Plan Study Area
- Freeway Interchange
- Proposed Freeway Interchange
- Interstate
- State Highway
- Local Roads
- Incorporated Boundary
- Jurisdiction Limits
- Downtown Area
- Study Area Boundary
- Railroad
- Canals



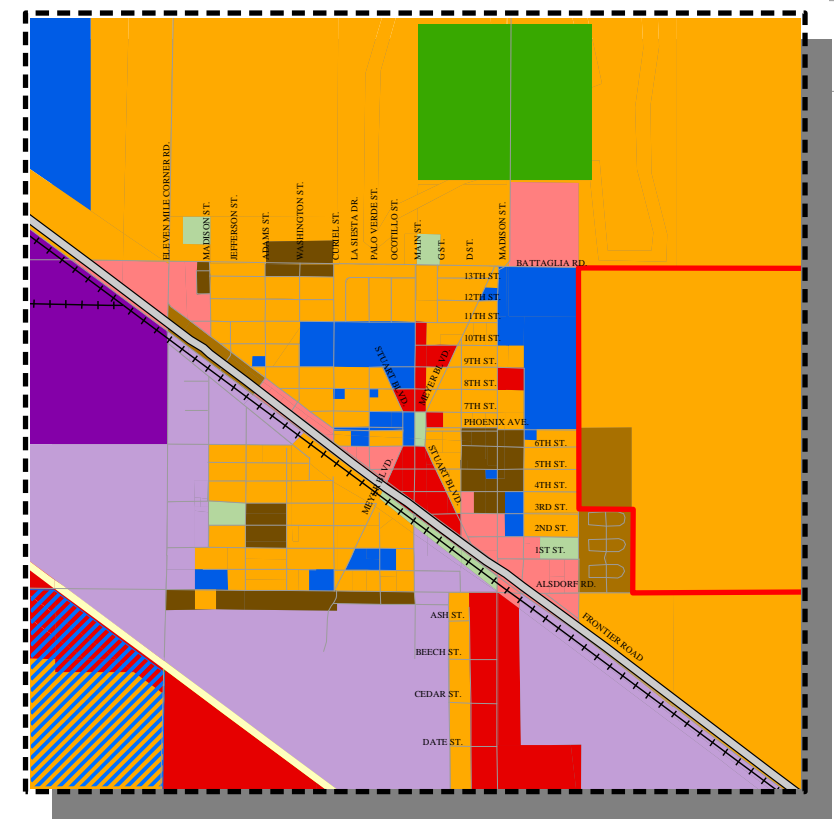
TOHONO O'ODHAM INDIAN COMMUNITY

CITY OF CASA GRANDE

ARIZONA CITY

ELOY MUNICIPAL AIRPORT

DOWNTOWN AREA



Source: URS, May 2004.